

# Mohair Centre



## A WEEK OF COLOURS

Half Term Holiday Playscheme  
Tuesday 27th May – Friday 30th May

**TUESDAY** 27<sup>th</sup> May

**WEDNESDAY** 28<sup>th</sup> May

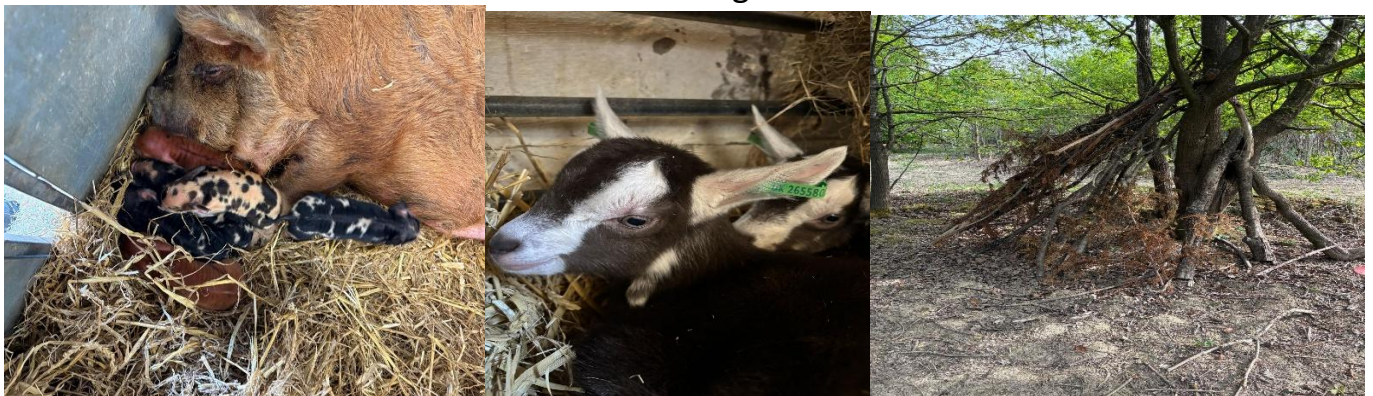
**THURSDAY** 29<sup>th</sup> May

**FRIDAY** 30<sup>th</sup> May

Children aged **5-11** years

Please Email Jacky: [holidayclub@mohaircentre.co.uk](mailto:holidayclub@mohaircentre.co.uk) to book your place!

Each day will include feeding the animals and routine stock tasks on the farm. We still have lots of bottle-feeding to be done.



**\* Forest school\***

**\*Lighting Fire & Cooking \***

**\*Denmaking\***

**\*Candle-making\* Woodland Crafts\***

**\*Painting galore \* Farm Jobs \* Bottle-feeding \***

**\*Dye-ing using natural dyes to change the colour of woollen fleece yarn\***  
**\*Dressing up\* Wood-work\* Papermache\* Daz Clay Modelling,**  
**\* Lots more!\***

**Staff:** Caroline, Jacky, Lorena, Nathan, Ian, Juliette, Claire, Hannah, Michael, Lauren, Cassie & Maggi

## **What does your child need to bring?**

- Please bring clothes that don't matter, and spare clothes too. The children are likely to get messy!
- We cannot stress enough the importance of waterproof trousers!! We are surrounded by mud - which is great but please make sure children are arriving with the correct clothing!
- Wet weather clothing and named welly boots are mandatory.
- A bag to put muddy clothes in.
- **Sun lotion and sun hats** (IT IS ESSENTIAL THAT EVERY CHILD HAS THEIR OWN NAMED SUNCREAM) Please put suncream on them first thing and we will top up later.
- Please ensure that all items are clearly named! We will need to name wellies and other items with a black sharpie, so that they can be easily found and identified should they be lost.
- Lost Property – should you lose anything please let us know as soon as possible, as lost property is bagged daily and will be given to charity by the following School Holiday Playscheme as we can't store lost property indefinitely.
- Please provide your child with a healthy packed lunch & cold pack if needed, along with a named water bottle. We provide a healthy snack and a drink at Break-times.
- A smile

We are a registered Day care facility, inspected by Ofsted. Ofsted – 0300 1231231. We have a full set of policies including a complaints procedure. Some of these policies are available in the Parent Handbook, which you will receive before the start of the Holiday Playscheme. You will receive joining instructions before the start of the Playscheme. Please ask if you would like to see all our policies and procedures. We work on a ratio 1:8 adults to children and safety is always most important on the farm.

## **Booking – all fees must be received in advance**

Bank details: MOHAIR CENTRE LTD  
Sort Code: 30-99-50 Account: 64147063  
Please quote child's name as the reference. Tax  
Free Childcare Available (Mohair Centre Childcare)

Cancellation Policy: We are sorry, but fees are non-refundable after 20<sup>th</sup> May but may be given as a credit at our discretion.

**Breakfast Session      8.00 am - 10.30 am @ £8 per hour**

**Core Session      10.30am to 4.30pm @ £45.00**

**Teatime Session      4.30pm - 6.00 pm @ £8 per hour**

We cannot accept any children without correct, up to date registration details.

## BOOKING PROCEDURE

**(Please note procedures within the Nursery are very different and Holiday Playscheme bookings must not be made via the Nursery nor Nursery Bookings via the Holiday Playscheme.)**

1. Please Email to gain a provisional place Your booking is complete once payment has been received. Joining Instructions will be sent the week before the first day of the Holiday Playscheme; 27<sup>th</sup> May [holidayclub@mohaircentre.co.uk](mailto:holidayclub@mohaircentre.co.uk)
2. Please note that places go **FAST**, do not delay, avoiding disappointment. Once the day is full we will keep a Waiting List. We work on a first come first served basis.
3. Once your booking is confirmed by email, you will be given the amount owing. Payment should be made by bank transfer or childcare vouchers. We do not accept cash. All Holiday Playscheme Fees must be kept separate from other Mohair Centre transactions, specifically from the Nursery or After School Club.
4. Please use your child's surname to ensure that payment is easily tracked and indicate which Voucher Company has been used to help us find your payment.
5. You will be required to fill in an updated registration form, if you have not attended in the last 6 months

